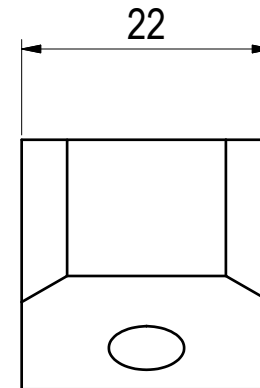
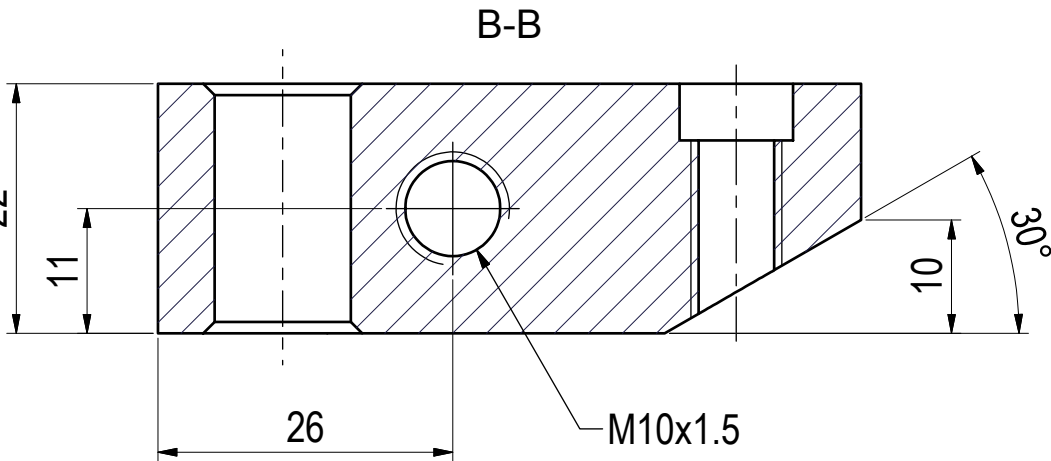


4 X 45° Chamfer  
 M8x1.25  
 □ Ø10 ∇ 5



### PTD IL Project

Part Name: PTD\_steering\_arm

Part No: PTD\_steering\_arm

Dwg No: PTD\_steering\_arm

Drm By: iccfsin

Date: 05/2003

File: PTD\_steering\_arm.ipt

Rev No:

Rev By: iccfsin

Date:

Finish:

Material: MILD STEEL

Scale: 3 : 2

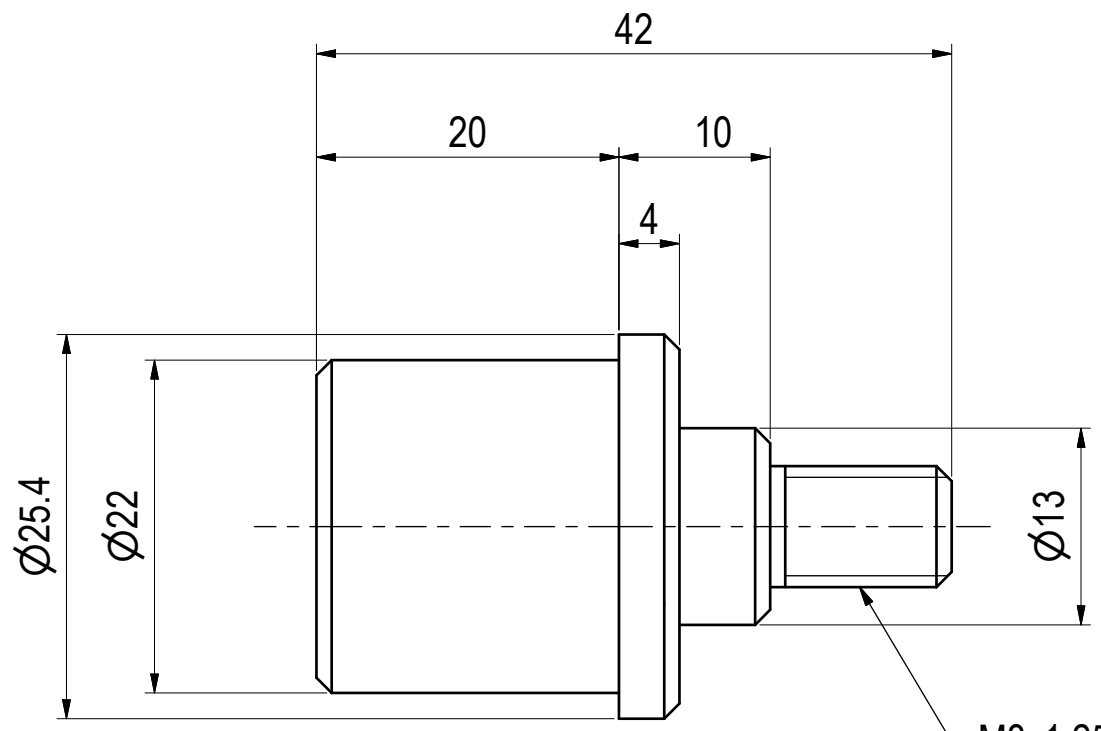
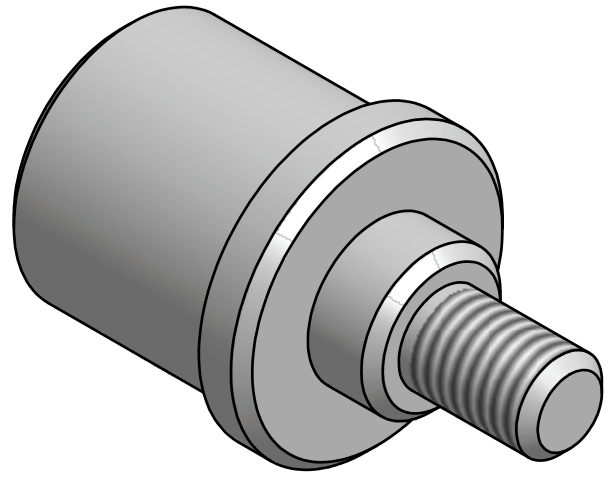
DO NOT SCALE DRAWING

PROJECTION

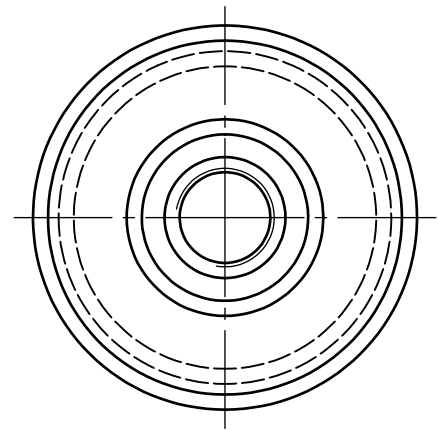
GENERAL MACHINING TOLERANCE  
 .X ± 0.20  
 .XX ± 0.05  
 0 TO 250 ± 0.5  
 500 & ABOVE ± 2.0  
 TIR ± 0.20  
 ANGULAR ± 1/4°



THE HONG KONG  
 POLYTECHNIC UNIVERSITY  
 INDUSTRIAL CENTRE



M8x1.25 - 6g



### PTD IL Project

Part Name:	PTD_steering_pole_joint
Part No:	PTD_steering_pole_joint
Dwg No:	PTD_steering_pole_joint
Drm By:	iccfsin
Date:	05/2003
File:	PTD_steering_pole_joint.ipt
Rev No:	
Rev By:	iccfsin
Date:	
Finish:	
Material:	MILD STEEL
Scale:	2 : 1
DO NOT SCALE DRAWING	
PROJECTION	
GENERAL MACHINING TOLERANCE .X ± 0.20 .XX ± 0.05 0 TO 250 ± 0.5 500 & ABOVE ± 2.0 TIR ± 0.20 ANGULAR ± 1/4°	



THE HONG KONG  
POLYTECHNIC UNIVERSITY  
INDUSTRIAL CENTRE